

# Covance animal environmental enrichment programme – In-house enrichment items, their benefits and the process of implementation

MICHAEL EMMOTT

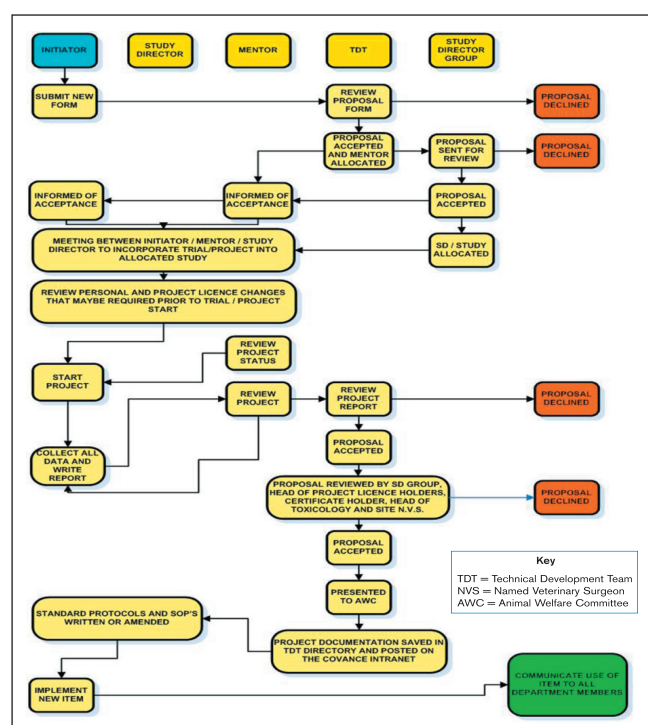
Research Associate, Animal House Operations, Covance Laboratories Ltd, Harrogate UK

*Reprinted from ATW Volume 9.8 December 2010*

## Introduction

At Covance, the wellbeing and needs of the animals in our care are top priority. Over the years we have tried to provide all our animals with the most up-to-date and naturally beneficial enrichment to help mimic their natural environment. We currently source items and products from companies that are experienced in this field and work closely with them to produce new products that have the needs of the animals in mind. New and more advanced products are continually introduced into the market, appearing to improve the environment of the animals, but do they? At Covance, we have a system in place to put all new items to the test. Items are issued to us from leading suppliers and then tested, reviewed and reported using a robust process. If an issue is found at any stage of this process, then the item or product is rejected and kept on file to ensure that the same product is not introduced at a later date. This poster details the process we follow and also shows some of the enrichment products used by the main species here at Covance.

## Process of implementation



## Rodents



Figure 1



Figure 2

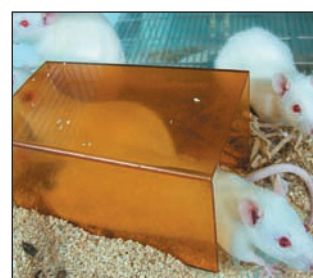


Figure 3

Figures 1, 2 and 3 show items we currently use within our rodent facilities. We use a variety of enrichment products on a wide range of species. Each of these items provides their users with a variety of enrichment, including forms of entertainment to alleviate boredom and to reinforce natural behaviour. The items we provide to our rodents include:

- Aspen chew blocks – help keep teeth growth in check.
- Sizzle nest – for bedding and nesting.
- Amber tunnels – add a “hide away” area and a raised area to climb on, creating an added dimension to the cage.

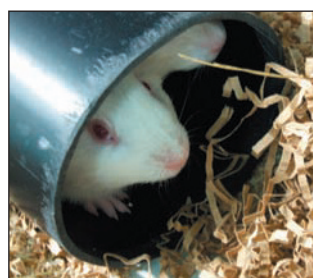


Figure 4



Figure 5

Figures 4 and 5 show guinea pigs and rabbits in our care. Guinea pigs receive Sizzle nest and lengths of tunnel, which are used as a means of retreat. Rabbits are provided with Sizzle nest, Aspen chew blocks, hay and a shelf that provides shelter and a raised platform. All of these items are standard.

## Canines



Figure 6



Figure 7



Figure 8

Within the canine department we have a number of rooms particularly designed for exercising (figures 6-8). Each dog is given a minimum of 10 minutes twice weekly, which is not only a time for the dog to play with toys, but also for them to interact with the staff who work closely with them. We provide a number of items, including:

- climbing frames and slides
- kongs
- friz-bees
- dental balls
- dumbbells
- havaballs
- pulling ropes
- sand pits

## Primates



Figure 9



Figure 10

As shown in Figures 9 and 10, primates within our care are provided with exercise pens that they are allowed access for 3-3.5 hours at a time. we use a variety of plastic, rubber and metal toys, which include:

- super challenger ball
- rhino dental
- tug toys
- hercules dental
- havaballs
- stainless steel rattles
- monkey shine mirrors
- ladders
- dumbbells
- goodie space balls
- squeeze'n toss footballs
- buoys
- water baths
- netting